

PSV "NORSEA FIGHTER"

SHIP DESIGN		STX PSV 08 CD	
CLASSIFICATION		BUREAU VERITAS	
BUILDER		STX OSV BRATTVAAG	
DELIVERY		2012	
FLAG		Bahamas, Nassau	
IMO No:	9623025	MMSI	311000805
Official Nr:	7001165	Inmarsat-C	431103662
Call Sign:	C6DW8	Inmarsat-C	431103661
MAIN DIMENSIONS:		BV CLASS:	35101F
Length O.A	81,70 m	CLASS NOTATIONS: I ✕ HULL ✕ MACH Offshore Support Vessel, Fire-Fighting, Supply, Oil recovery - Oil product. Unrestricted navigation. ✕AUT-UMS , ✕SYS-NEQ-OSV, ✕DYNAPOS AM/AT R, COMF-VIB 3, CLEANSHIP SUPER, ICE CLASS ID, SDS	
Length P.P	74,00 m		
Breadth	18,00 m		
Depth	7.80 m		
Max Draft	6.50 m		
Gross Tonnage	3580		
Net Tonnage	1322		
Deadweight	4083 t		
Lightship	2666 t		
SHIP'S CONTACTS:		MANAGER:	VESTLAND MANAGEMENT AS Austevollshellevegen 67 N-5384 TORANGSVÅG,
Mob.: +4790541658	V-SAT: 004753007242		
E-mail Captain:		captain.fighter@vestlandoffshore.no	
E-mail Bridge:		bridge.fighter@vestlandoffshore.no	



OUTLINE SPECIFICATION

MACHINERY AND PROPELLER PLANTS

Main engines:

Type/No: Wartsila W9L20 - 2 x 1665 kW

Type/No: Wartsila W6L20 - 2 x 1100 kW

Main Propellers:

Azimuth thrusters: Schottel Twin propeller, STP 1212 FP 1600 kW;

Side Thrusters:

Bow Tunnel thruster: Brunvoll FU-74-LTC-2000 - 850 kW

Bow Azimuth thruster: Brunvoll AR-63-LNA-1650 - 800 kW

Main Generators:

Make/Type: AvK DSG 99 K1/8W - 2 x 1780 kVa I 690V, 60 Hz

Make/Type: AvK DSG 86 M1/8W - 2 x 1187 kVa I 690V, 60 Hz

Emergency Engine: Caterpillar C6.6 ACERT. 138 ekW

Emergency Generators: Leroy Somer, 1 x 138 ekW / 440V 60 Hz

CARGO CAPACITIES NOFO 2009

Deck Cargo:	2 200 Tons
Deck Area:	840 m ²
Deck Strength:	10 t/m ² aft of Fr.25; 5 t/m ² forward of Fr.25
Fuel Oil:	800 m ³ ,
Liquid Mud/Brine (SG 2.8):	1270 m ³ ,
Agitators:	Fitted in each mud tanks
Base Oil:	300 m ³ ,
Potable Water:	800 m ³ ,
Drill Water/Ballast:	1319 / 1802 m ³ ,
Dry Bulk	304 m ³
Methanol:	222 m ³ ,
ORO:	1500 m ³ ,

Discharge

Fuel Oil Cargo pump:	1 x 200 m ³ /hour @ 9 bar
Fuel Oil / ORO pump:	1 x 100 m ³ /hour @ 9 bar
Pot Water	2 x 150 m ³ /hour @ 9 bar
Drill water/Ballast	2 x 150 m ³ /hour @ 9 bar
Brine (SG 2.5):	2 x 100 m ³ /hour @ 20,7 bar
Base Oil:	1 x 100 m ³ /hour @ 9 bar
Methanol / Special Product	2 x 100 m ³ /hour @ 9 bar
Liquid mud	2 x 100 m ³ /hour @ 24 bar
Cement/Barite/Bentonite:	2 x 25 m ³ / min @ 5.8 bar
ORO	8 x 100 m ³ /hour @ 9 bar

MANOEUVERING POSITIONING SYSTEM

Compete integrated maneuvering, dynamic positioning and vessel management system consisting of:

DP Control System: Kongsberg K-POS DP-21

Reference systems:

2 x DGPS: Seatex DPS 200 & Seatex DPS 122;

1 x Radius 1000; 1 x FanBeam 4.2 MDL;

Sensors: 3 Gyro, 3 MRU, 2 Wind sensors

Independent Joystick : Kongsberg Maritime c-Joy

ENVIRONMENT AND CARGO CONTROL PLANTS

Steam Generator:	Parat Halvorsen AS 1600 kW
Hot Liquid Cargo Tank:	1 x 12 m ³
Tank Cleaning:	Per Gjerdrum AS
Special Cargo Tanks:	Stainless Steel Tanks for Methanol
Cargo Manifolds:	on each side of cargo deck
Inert Gas System	powered by external N ₂ bottles

SPEED AND FUEL CONSUMPTION

Full speed:	12.7 knots 14.0 m ³ /24 hours
Economic speed:	9.5 knots 8.0 m ³ /24 hours
Service speed:	10.5 knots 10.0 m ³ /24 hours
DP operation:	4.0 m ³ /24 hours at position keeping
Harbor mode:	1.5 m ³ /24 hours

DECK EQUIPMENT

Anchor/ Mooring winch Fwd 1 x Adria Winch, TS 361-001 150kN

Tugger winches: 2 x Adria Winch TS 351-008-B 100 kN

Capstan AFT: 2 x Adria Winch, TS 851-001 80kN

Crane: 1x TTS GP 115-2-17. SWL 2 t at 17m radius.

LIFE SAVING EQUIPMENT

MOB-boat: MARE GTC 700 2VD

Dimensions: LOA=7.18 m x B= 2.85 m, Capacity: 8

Liferafts: 6 x16 man, SURVITEC 16 DFK

Survival suits: 30 persons

COMMUNICATION

INMARSAT-C Terminal: 2 x Thrane & Thrane

MF/HF DSC Radio Station GMDSS: Sailor 6301

VHF DSC Station GMDSS: 2 x Sailor 6222 VHF DSC

VHF Stationary: 1 x Sailor 6210 VHF

GMDSS VHF hand-hailed: 3 x SP3520 with spare batteries

VHF portable: 6 x Motorola GP 340

UHF Stationary 5 x Motorola GM360

UHF Portable 6 Motorola

NAVIGATION

Gyro Compass 2 x Anschutz Standard 22

Satellite Gyro Compass JLR-20

Auto Pilot: Anschutz PilotStar D

Radar ARPA 3 cm: Furuno FRC-2117

Radar ARPA 10cm: Furuno FAR-2137S BB

Oil Detection Radar software.

AIS: Furuno FA-150

ECDIS: TELKO, TECDIS

Echo sounder : Furuno FE-700, 50 Khz

Doppler Speed log: Furuno DS-80

VHF Direction Finder: 1x Taiyo TD-L 1550

Wind sensors: 2 x Gill Windobserver II

DGPS: 2 x Furuno GP 150

NAVTEX: Sirius-3

ACCOMMODATION

Total: 26 persons

Day room – 2

Messroom – 1 (16 persons)

Cabins state: 3

Single bed cabins: 12 cabins (12 persons)

Double bed cabins: 7 cabins (14 persons)

Hospital: 1 off

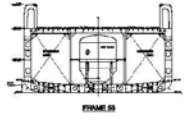
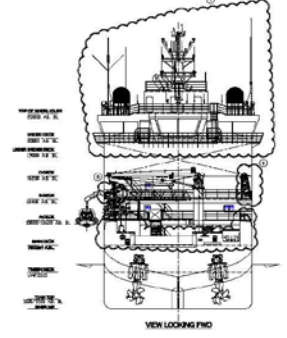
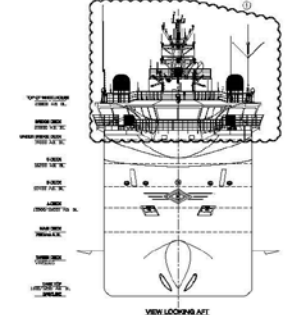
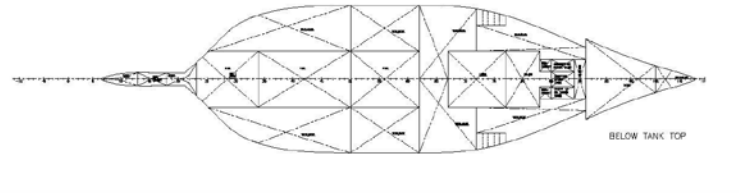
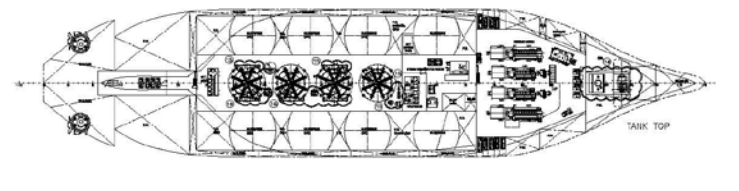
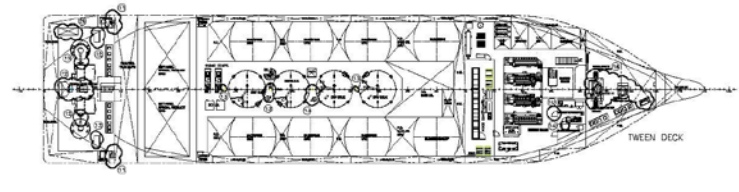
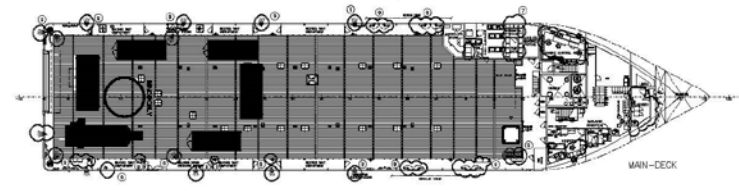
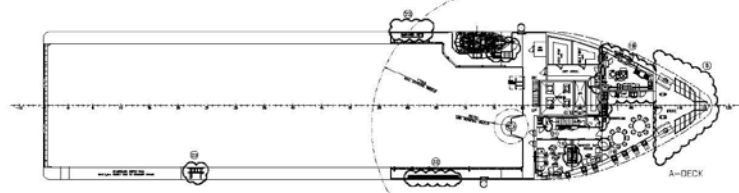
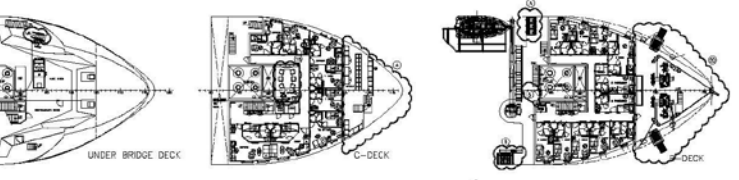
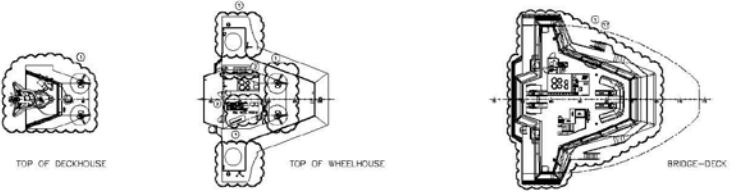
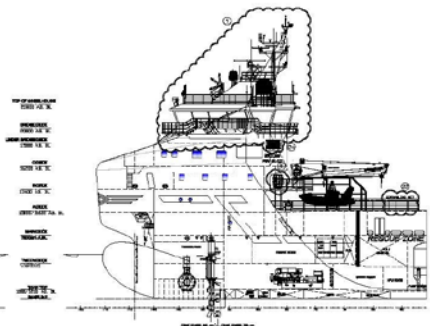
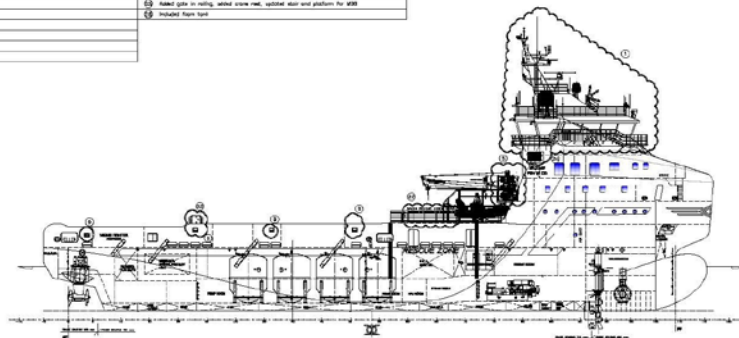
Entertaining equipment:

- Gymnasium with equipment
- Sat TV and internet in day rooms and each cabin

All specifications are subject to changes.



- 1) Show up upper top of wheelhouse
- 2) Upper top of emergency generator room
- 3) Upper hatchway
- 4) Aboard stairs for work
- 5) Upper deck arrangement
- 6) Upper hatchway deck
- 7) Aboard stairs for port and starboard side
- 8) Aboard stairs for main deck
- 9) Upper main deck arrangement
- 10) Change deck
- 11) Aboard main deck
- 12) Change in propulsion room
- 13) Aboard stairs for upper deck room
- 14) Aboard main
- 15) Aboard stairs for pump room
- 16) Upper low truster room
- 17) Upper top of wheelhouse
- 18) Upper top of main office
- 19) Some cabins of office, main room and key rooms
- 20) Some cabins of living compartment
- 21) Aboard stairs deck
- 22) Propulsion machinery, incl. old diesel engine
- 23) Propulsion machinery loop for air stream
- 24) Lower deck with old diesel
- 25) Aboard stairs in rolling, wheel drive, control deck and platform for W&B
- 26) Propulsion main room



PSV 08 CD

MAIN PARTICULARS APPROX.

LOA	81.7 m
L.P.P.	74.0 m
BEAM @ MLD	18.0 m
DEPTH BAWL	7.8 m
MAX DRAUGHT	8.8 m
LIQUID MUO / DRINE	1 200 m ³
DRY BULK	300 m ³
METHANOL / SPECIAL PRODUCTS	300 m ³
FUEL OIL	800 m ³
FRESH WATER	800 m ³
WATER BALLAST / DRILL WATER	1 800 m ³
CRD	1 800 m ³
BASE OIL	300 m ³
DECK CRD (5m above dk)	2 200 t
CARGO DECK AREA	800 t
DEADWEIGHT	4 000 t
ACCOMMODATION:	
SINGLE CABINS	13 PERSONS
DOUBLE CABINS	14 PERSONS
TOTAL	28 PERSONS

CLASSIFICATION AND NOTATIONS:

DNV-GL: Clean Ship Vessel, 55, 60, 65, 70, 75, 80, 85, 90, 95, 100, 105, 110, 115, 120, 125, 130, 135, 140, 145, 150, 155, 160, 165, 170, 175, 180, 185, 190, 195, 200, 205, 210, 215, 220, 225, 230, 235, 240, 245, 250, 255, 260, 265, 270, 275, 280, 285, 290, 295, 300, 305, 310, 315, 320, 325, 330, 335, 340, 345, 350, 355, 360, 365, 370, 375, 380, 385, 390, 395, 400, 405, 410, 415, 420, 425, 430, 435, 440, 445, 450, 455, 460, 465, 470, 475, 480, 485, 490, 495, 500, 505, 510, 515, 520, 525, 530, 535, 540, 545, 550, 555, 560, 565, 570, 575, 580, 585, 590, 595, 600, 605, 610, 615, 620, 625, 630, 635, 640, 645, 650, 655, 660, 665, 670, 675, 680, 685, 690, 695, 700, 705, 710, 715, 720, 725, 730, 735, 740, 745, 750, 755, 760, 765, 770, 775, 780, 785, 790, 795, 800, 805, 810, 815, 820, 825, 830, 835, 840, 845, 850, 855, 860, 865, 870, 875, 880, 885, 890, 895, 900, 905, 910, 915, 920, 925, 930, 935, 940, 945, 950, 955, 960, 965, 970, 975, 980, 985, 990, 995, 1000

CLASSIFICATION	1:200	783-101-001 D
STX OSV	PSV 08 CD	GENERAL ARRANGEMENT
NO. 1000 758	NO. 1000 758	NO. 1000 758

